

## **Introducing the Australian Philatelic Federation**

### **By Ian McMahon, Philatelic Development Officer, APF**

This month I look at the 2014 Australasian Challenge, the World Youth Stamp Exhibition, Being a Commissioner to an International Exhibition: Part 4 *Returning Home* and the APF visiting speakers program.

#### **Australasian Challenge 2014**

The 2014 Australasian Challenge will be held at Baypex 2014, a New Zealand National Exhibition to be held 14 -16 November 2014 at Napier in New Zealand. The Challenge will include teams from each Australian state, the ACT and the north and south islands of New Zealand. Each team will comprise four exhibits from different classes as well as two exhibits from any class from either novice exhibitors or youth exhibitors.

The teams will compete for the Ed Druce Memorial Trophy which is a perpetual trophy and was first awarded in 2002 to Western Australia. Other winners have been the ACT (2004), North Island New Zealand (2006), and New South Wales (2008 and 2010). The current holders of the Australasian Challenge are Queensland who won the Challenge at Canberra Stampshow 2012. The trophy is named after Dr Edric (Ed) Druce who was a prominent collector of postal history and postal stationery including that of New South Wales.

#### **World Youth Stamp Exhibition**

Visitors to Australia 2013 had the chance to view many interesting and outstanding exhibits from young stamp collectors. Youth exhibits are a key feature of international stamp exhibitions, even if Australia has relative fewer youth exhibitors when compared with some overseas countries.

To highlight youth exhibiting there is an international youth exhibition being held in Malaysia from 1-6 December 2014. Malaysia 2014 World Youth Stamp Exhibition will be held in Kuala Lumpur, Malaysia. The exhibition will also include classes in modern philately as well as the 29th Asian International Stamp Exhibition. Many of the youth exhibits are of a high standard and can provide ideas for adult exhibitors. Three Australian youth exhibitors have entered the exhibition.

If you are interested in seeing some of the world's best youth philatelic exhibits, plan now to visit Malaysia 2014.

#### **Being a Commissioner to an International Exhibition: Part 4 *Returning Home***

In the third part of the article I covered some of the responsibilities of the Commissioner during the exhibition. In this part I will look at returning home.

After many days of excitement and involvement with the exhibition, the time has come when the commissioner must prepare to return home. The Exhibition organisers will have provided the Commissioner with information as to how and when they can collect the medals, certificates, special prizes, catalogues and award lists for the exhibitors, of any arrangements for posting material back to the commissioner and the arrangements for retrieving the exhibits and the arrangements for customs and transport to the airport.

At the time announced by the Exhibition, the Commissioner must return to the bin room to collect the exhibits. These are once again checked against the inventory forms to ensure that everything is on order and all of the exhibits are returned intact and undamaged. Once again patience is required as there are many commissioners and large numbers of exhibits to be processed the Commissioner needs to wait their turn. Once again patience is required. It is not unknown for exhibits to be finally returned to a commissioner at 2 am in the morning after the Commissioner has waited all afternoon and evening.

If customs have an office at the exhibition the exhibits will then be returned to customs and transported by the exhibition to the airport. If not the Commissioner will take the exhibits with them and pass through the necessary customs formalities before checking the exhibits at the airline counter. The Commissioner will hopefully have made arrangements to handle the excess baggage and will begin their trip home.

On arriving in Australia, the Commissioner will declare the exhibits to Customs as returning to Australia and present the appropriate documentation. If the documentation is in order Customs will quickly authorize the reentry of the exhibits.

Once home, there is still work to do. The Commissioner needs to return the exhibits to the exhibitor in line with the exhibitor's instructions. This can be in person, by using members of the APF to carry the exhibits, for example at an APF executive meeting or in some cases by a secure postal or courier service.

The Commissioner writes a report on the exhibition for the APF including any reports from the Expert Group and commenting on the processes at the Exhibition. They also write reports for APF News, the Asia Pacific Exhibitor and other Journals. They must pass the results to the APF webmaster for uploading to the APF website and need to provide exhibitors with their points breakdown and any feedback from the Jury critique. They also have to provide exhibitors with their certificates, medals and any special prizes.

Once all that is done the Commissioner may be in a position to relax. Being a Commissioner is a responsible and at times difficult job, requiring an ability to solve problems and lots of patience. If you think it is a job you would be interested in you can start as a commissioner to a national exhibition in Australia. Contact your State or Territory Council for more information.



*Passing the FIP Flag*

### **APF Visiting Speaker Program**

The APF encourages clubs and societies to organise events where talks and displays can be given by experienced philatelists.

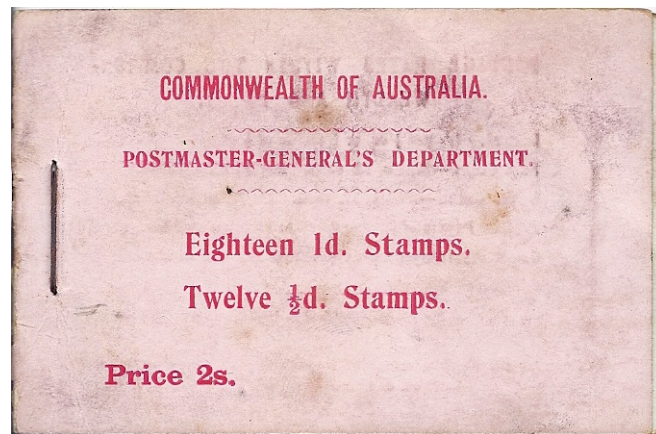
To assist clubs in identifying possible speakers, the APF maintains a list of speakers who are prepared to display clubs and the topics they are prepared to display. The topics cover a very broad range including Australia, British Commonwealth and the rest of the world as well as covering all philatelic classes from traditional and postal history to revenues, thematic, open and postcards.

Having a visiting speaker at your stamp club gives your members the opportunity to see stamps that they may otherwise not see, talk to a collector about putting together a great collection, get ideas for arranging and exhibiting their stamps and see how examples of exhibits in the various classes. For example, inviting a speaker with an open class display will enable members to learn what the open class is about and how to develop an exhibit in the class.

Visiting speakers on the list cover most of the exhibiting classes with their displays ranging from traditional collections such as Australia KGV Definitives, Australian Booklet Issues,



and South African Postage Due Stamps, open philately displays such as Cricket and Australian Water Resources, thematic displays such as Ducks, astrophilately displays such as Friedrich Schmiedl – Rocket Mail Pioneer, revenue displays (for example Revenues of Israel, Fiscal Stamps of WA), a presentation on Australian Philatelic Literature 1901-70, maximaphily (for example Roads and Bridges), aerophilately such as France-Oceania Airmail Rates, postal history such as Postal History of Nyasaland and Aden Postal History to WWI and postal stationery such as *Panama Stationery*. Further information on this initiative can be found on the APF website.



*Commonwealth of Australia Stamp Booklet*



