

APF JUDGE'S TRAINING COURSE 2024

PHILATELIC LITERATURE

Geoff Kellow

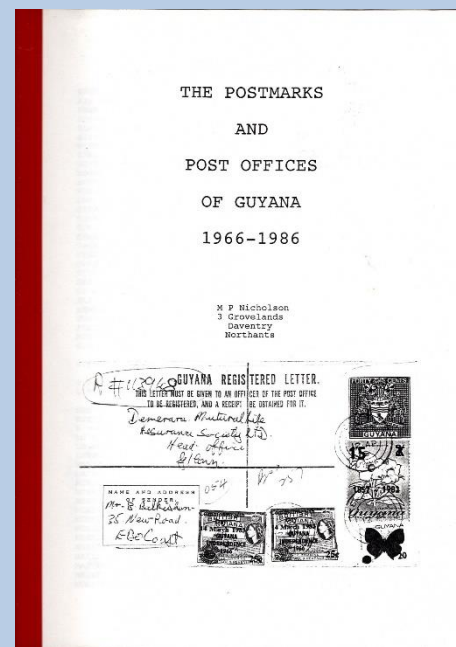
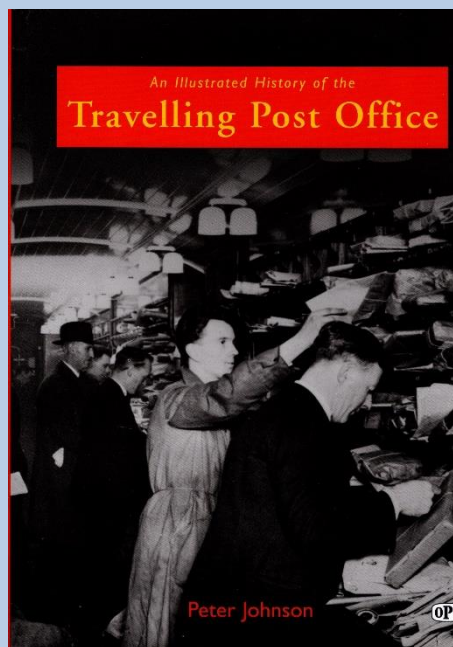
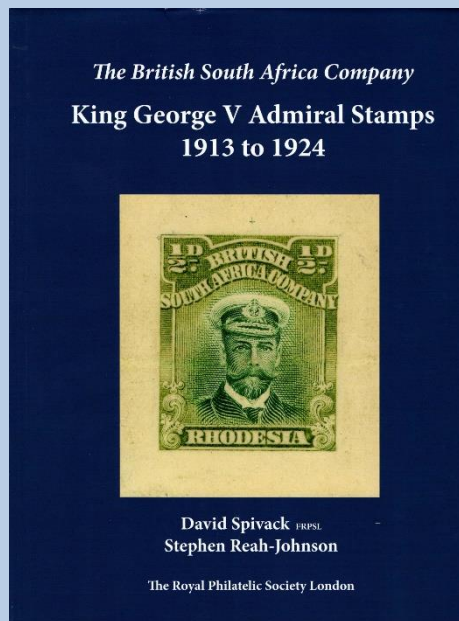
CATEGORIES OF PHILATELIC LITERATURE

- 1. Monographs – handbooks or specialised studies of any sort, priced catalogues, “documentation of collections”, specialised auction catalogues**
- 2. Periodicals, normally one year’s worth of issues is to be submitted for judging**
- 3. Digital media, including websites or monographs published only in electronic form**

Generally, all works must have been published in the two years preceding the exhibition.

CATEGORIES OF PHILATELIC LITERATURE

MONOGRAPHS



CATEGORIES OF PHILATELIC LITERATURE

PERIODICALS

May/June 2024
AUS\$9.95
incl GST

Australian STAMPS PROFESSIONAL

Vol. 48 Issue 4 No. 197

THE 1935 PICTORIAL DEFINITIVE STAMPS OF NEW ZEALAND
Lionel Savins

A COVER WITH A CONNECTION
By Evan Bayliss

COLLECTING THE KGV-4D ORANGE, VIOLET & BLUE VARIETIES
Scott Starling

BEXLEY Catalogue Pull Out

www.austrianstampsgpro.com 97771634638004

The **Courier**
Journal of the
Tasmanian Philatelic Society

Number 76
April 2024

TASMANIAN PHILATELIC SOCIETY

CONTENTS
Norfolk, North
C.F.O. Hobart
Auction Items of Interest
Tasmanian Postal Markings from the 1880s
Dundas Junction and North Dundas Road Post Offices 1891 - 1919
The Dilston Fall Enigma Revisited
Book Reviews: Photographs by Sportings - A Treasure Trove of Tasmanian Images

THE GBPS NEWSLETTER

BI-MONTHLY NEWSLETTER OF THE GREAT BRITAIN PHILATELIC SOCIETY
THIS NEWSLETTER IS PUBLISHED BY COLLABORATION WITH THE SOCIETY MEMBERS

July/August 2024
GBPS NEWSLETTER 408 • JULY/AUGUST 2024

Editor: **CHRIS GEORGE**
Tel: 0711 251 9072
Email: newsletter@gbps.org.uk

Editorial
The 1st Laid Day in April was a huge success. Very well attended and with displays of exceptional quality. There were in excess of the displays in this school. And my thanks to Bob Calvert, Ian Henry and Chris Hargman for helping me to promote. The book is now available and can be ordered through the Society.

Contents

- Editorial
- The President Writes
- Newsletter Chair Dates
- New Members
- GBPS Programme 2024-2025
- Fortnightly Meetings
- Instructions for Submitting Material
- Letters / Short Notices
- Marker Pen Cancellation
- All Souls College
- A New Surprise
- Scott Postcard Contest
- Chunnel Postcards and Other Foreigners
- Chunnel Islands Specialists' Society
- Society Displays (Competitions Day)
- Society Displays (1st Laid Day)
- 'Penney' 1st Stamp
- Forerunners Display
- Members' Displays
- GBPS Merchandise
- Society Tea
- GB Journal Endorsement
- East Anglian Postal History Survey
- New Book: Penny Mail

I would also ask anyone who has experience of writing or editing at a committee level would be prepared to share their experience and 'top tip' in the Newsletter. I am sure this would be of interest to members who are considering setting up a collection or display. I am sure this would be of interest to members who are considering setting up a collection or display. I would welcome any offers or comments.

CHRIS GEORGE

JUDGING PHILATELIC LITERATURE

For the evaluation of literature, the following criteria are considered, with points awarded as follows:

Treatment of Contents	40
Originality, Significance and Depth of Research	40
Technical Matters	15
Presentation	5
TOTAL	100

TREATMENT OF CONTENTS

40 points

- **Literary style - is the author's writing style fluent and easy to read**
- **Acknowledgment and discussion of previous publications on the same subject**
- **Clarity - is the arrangement of the information (or chapters) logical**
- **Use of illustrations and tables**
- **Skill in Communication**

ORIGINALITY AND SIGNIFICANCE

40 points

- **Overall Significance** - importance of the work in terms of world philately, and of the specific subject matter
- **Level of Original Research** - is the work completely new, an extension of existing research, or only a rehash of existing information
- **Comprehensiveness** - depth and scope of the work, has the subject been exhaustively treated, or is it more introductory in nature
- **Understanding of Subject** - degree to which the author, in terms of the research and analysis presented, demonstrates a comprehensive understanding

TECHNICAL MATTERS

15 points

- **This category basically covers editorial aspects**
- **Title Page with date and place of publication, ISBN number**
- **Pagination**
- **Table of contents and Index**
- **Acknowledgments and Bibliography**
- **Use of illustrations and tables**
- **Use of footnotes**
- **General consistency of style throughout the work**

PRESENTATION

5 points

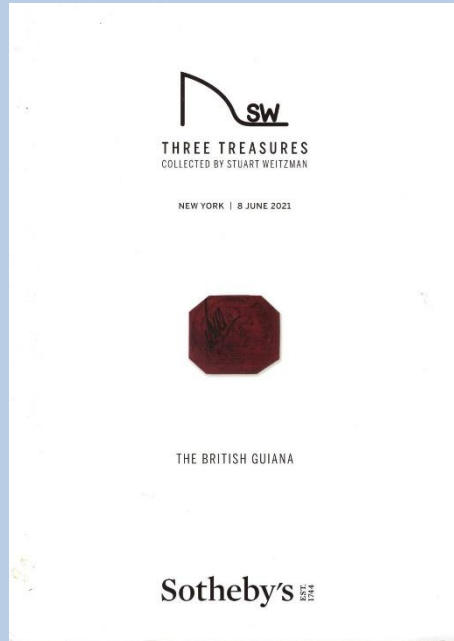
- **Binding**
- **Clarity of print**
- **Page size and paper quality**
- **Table of contents and Index**
- **Use of colour for illustrations**
- **It is not intended to unduly penalise less prestigious works under this category, and the points should be awarded consistent with the production costs**

PRESENTATION

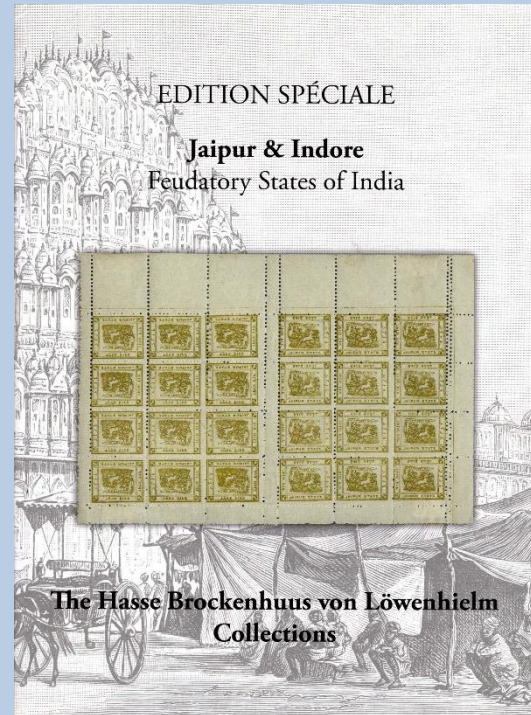
5 points

- **Binding**
- **Clarity of print**
- **Page size and paper quality**
- **Table of contents and Index**
- **Use of colour for illustrations**
- **It is not intended to unduly penalise less prestigious works under this category, and the points should be awarded consistent with the production costs**

PROBLEMS FOR JUDGING



Auction Catalogue



Reproduction of Exhibit

These will nearly always suffer when it comes to Originality and Research

PERIODICALS

- **Rarely obtain a medal level above Vermeil**
- **Journal editors have the difficult task of maintaining quality, with submissions from a range of authors on different subjects.**
- **Specialised society and study circle journals have a distinct advantage due to the preponderance of articles offering new research.**
- **General distribution journals contain a wide variety of articles, with many general in nature.**
- **Club, society or federation journals concentrating on the internal activities of their organisations similarly will perform poorly under Originality and Research**

APF JUDGE's TRAINING COURSE 2024

**THE EXPERT TEAM
AT FIP EXHIBITIONS**

Geoff Kellow

The Expert Team's Role

- **To check exhibits for any forged or otherwise dubious items**
- **To verify the existence of authenticated certificates**
- **To recommend appropriate actions in cases where forgeries, fakes, repaired or doubtful items are identified**

Composition of the Expert Team

- **Usually three or four members with a designated Team Leader**
- **Members preferably with a range of specialised knowledge in different areas**
- **Selected by Exhibition Management in consultation with FIP Consultant, subject to ratification by FIP Board**

Equipment

- **Computer**
- **Scanner**
- **Colour Printer**
- **Thumb Drive to transfer records to FIP Secretariat**
- **English-speaking assistant proficient in the operation of the computer and scanner.**

Preparatory Work

Review of previously identified items in exhibits at the forthcoming exhibition

- **The Exhibition Organiser supplies to the FIP Secretariat a complete list of all accepted exhibits, at least two months prior to the exhibition.**
- **From FIP records, items in those exhibits that required action are identified.**
- **The paperwork (together with scans) of those items are forwarded to the Expert Team Leader, together with e-mail addresses of the relevant National Commissioners.**

Preparatory Work

- **The Team Leader e-mails the National Commissioners attaching the relevant paperwork for their exhibitors, and asking them to contact those exhibitors to determine whether:**
 - **A certificate has been obtained for an item where it was requested (a scan to be forwarded to the Team Leader); if no certificate, that the item will be removed from the exhibit**
 - **Any item asked not to be exhibited again has been removed from the exhibit.**

Work at the Exhibition

- 2. Checking all exhibits in the Championship Class for any questionable items.**
- 3. Expert Teams members will then make examinations of exhibits at random, but most likely concentrating on their areas of expertise.**
- 4. As many items as possible are identified, although there is an upper limit as to the number of items that can be processed in the Jury time available.**

Evaluation Form

- **A form must be completed for each item, even if these are similar items on the same exhibit page.**
- **The form must be completed fully to enable unique identification within the exhibit of the item in question.**
- **The form should indicate the reason for the item being questioned.**

Examination of Questioned Items

- **The Exhibition Committee has organised (preferably two) teams for the unlocking of the frames.**
- **At the frames the National Commissioner supervises the removal of sheets for his exhibitor(s), each sheet then being placed with its accompanying Evaluation form.**
- **A sheet is placed in the frame in position of The removed sheet indicating reason for its absence.**

Examination of Questioned Items

In the Expert Team Room:

- **Each removed sheet is scanned and three colour copies are printed with the questioned item indicated.**
- **Two additional copies of the evaluation form are photocopied.**
- **The Evaluation forms and colour copies are collated.**

Examination of Questioned Items

- **The Expert Team meets as a group and considers each questioned item in turn, and determines a recommendation.**

This recommendation is generally one of three types

Examination of Questioned Items

- **No Action Required - the item is found to be in good order.**
- **Item Not to be Shown Again – in the case of very dubious items which are unlikely to receive a certificate.**
- **Certificate Required – if the item is to be shown again.**
- **Descriptions of items may need to be in improved or clarified.**

Distribution of Paperwork

- **At the same time as return of sheets, the relevant paperwork is also returned to the National Commissioners.**
- **The three sets of paperwork for each removed item are distributed as follows:**
 - 1. To FIP Secretariat for FIP Records.**
 - 2 and 3. To the relevant National Commissioners - one for their National Federation, and one for return to the exhibitor.**

Expert Team Report

- **The Expert Team Report is read to the Jury during its final session, and is later published in the Palmares document.**
- **It may contain recommendations to the jury regarding penalties to an exhibitor.**
- **Such penalties are unusual, and typically involve an exhibitor showing items that he has previously been asked to remove. The usual penalty is 5 points, representing one medal level.**